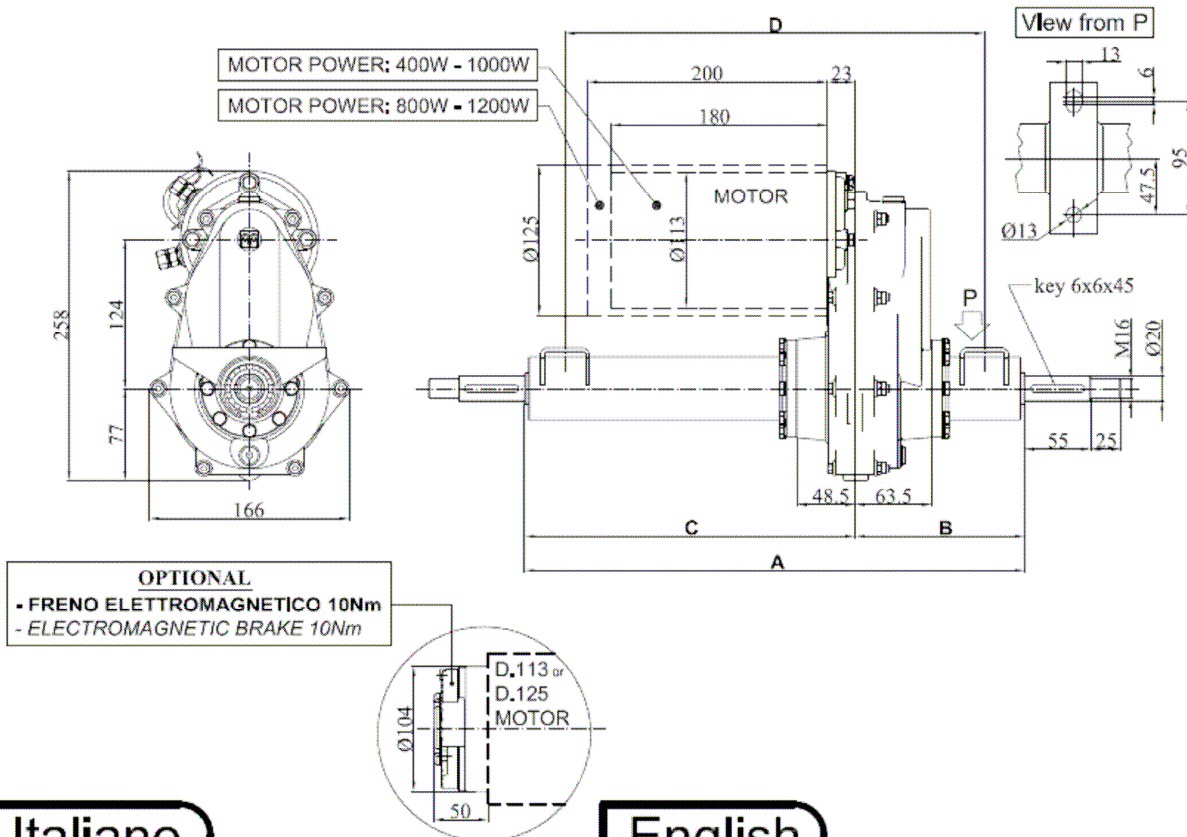


S21-ME



Italiano

DATI TECNICI:

- Motore fino a 1500W - 24V/36V/48V
- Coppia massima in uscita 400Nm
- Rapporti di riduzione standard: 10:1 - 15:1 - 20:1 - 25:1 - 32:1
- Assale per trazione posteriore con carichi fino a 300kg
- Attacco alla ruota: tramite albero
- Carreggiata a richiesta cliente

MISURE A DISEGNO:

- A = min.400mm - max.900mm
- B = a richiesta
- C = a richiesta
- D = a richiesta

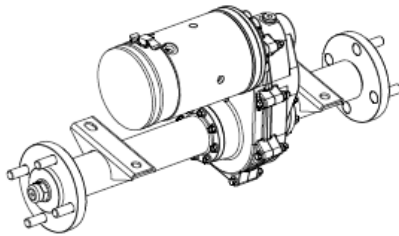
English

SPECIFICATIONS:

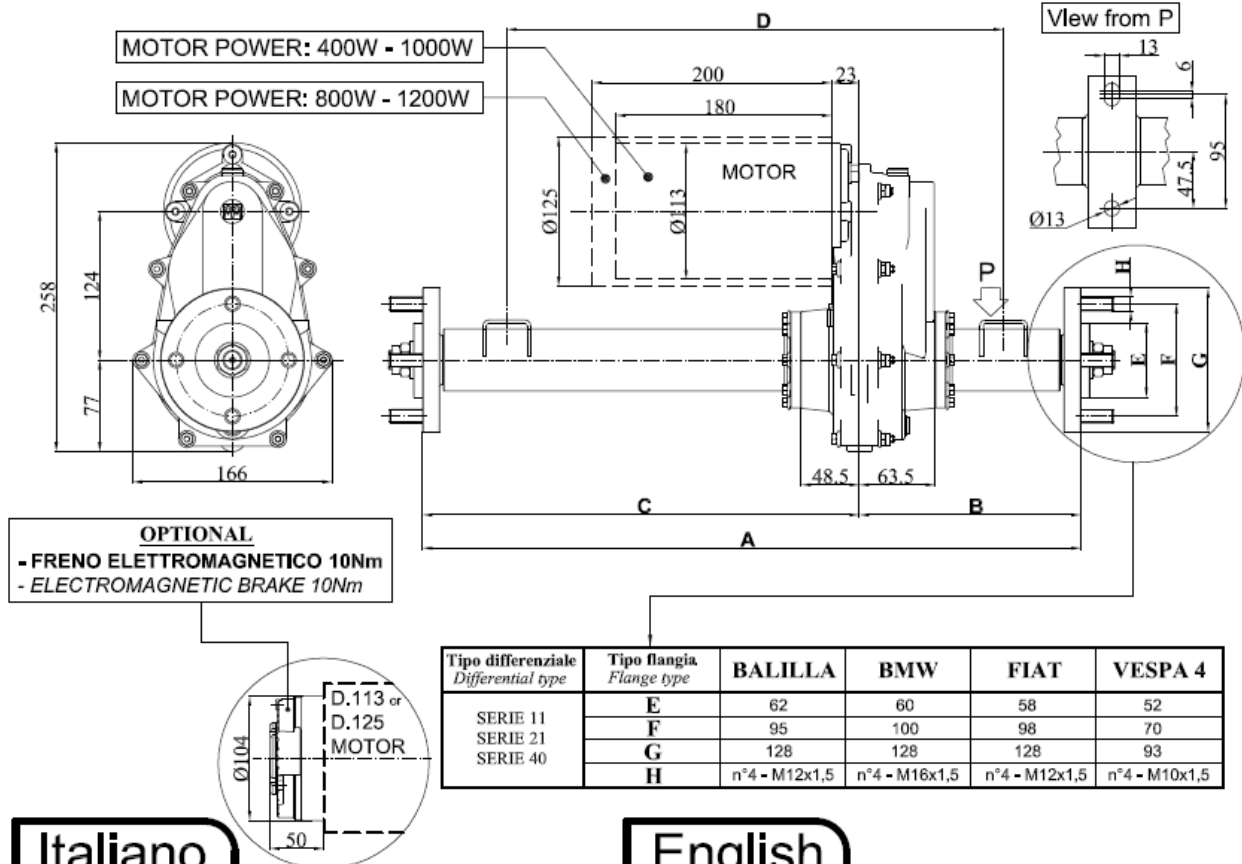
- Motor up to 1500W - 24V/36V/48V
- Maximum output torque 400Nm
- Standard gear ratios: 10:1 - 15:1 - 20:1 - 25:1 - 32:1
- Axle for rear drive for loads up to 300kg
- Wheel fitting: with shaft
- Track according to customer's requirements

DIMENSIONS TO DRAW:

- A = min.400mm - max.900mm
- B = according to customer's requirements
- C = according to customer's requirements
- D = according to customer's requirements



S21-ME



Tipo differenziale <i>Differential type</i>	Tipo flangia <i>Flange type</i>	BALILLA	BMW	FIAT	VESPA 4
SERIE 11	E	62	60	58	52
SERIE 21	F	95	100	98	70
SERIE 40	G	128	128	128	93
	H	n°4 - M12x1,5	n°4 - M16x1,5	n°4 - M12x1,5	n°4 - M10x1,5

Italiano

DATI TECNICI:

- Motore fino a 1500W - 24V/36V/48V
- Coppia massima in uscita 400Nm
- Rapporti di riduzione standard: 10:1 - 15:1 - 20:1 - 25:1 - 32:1
- Assale per trazione posteriore con carichi fino a 300kg
- Attacco alla ruota: tramite flangia
- Carreggiata a richiesta cliente

MISURE A DISEGNO:

- A = min.400mm - max.900mm
- B = a richiesta
- C = a richiesta
- D = a richiesta

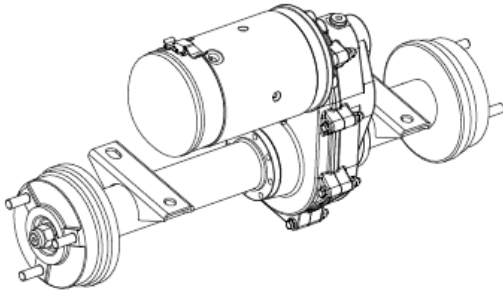
English

SPECIFICATIONS:

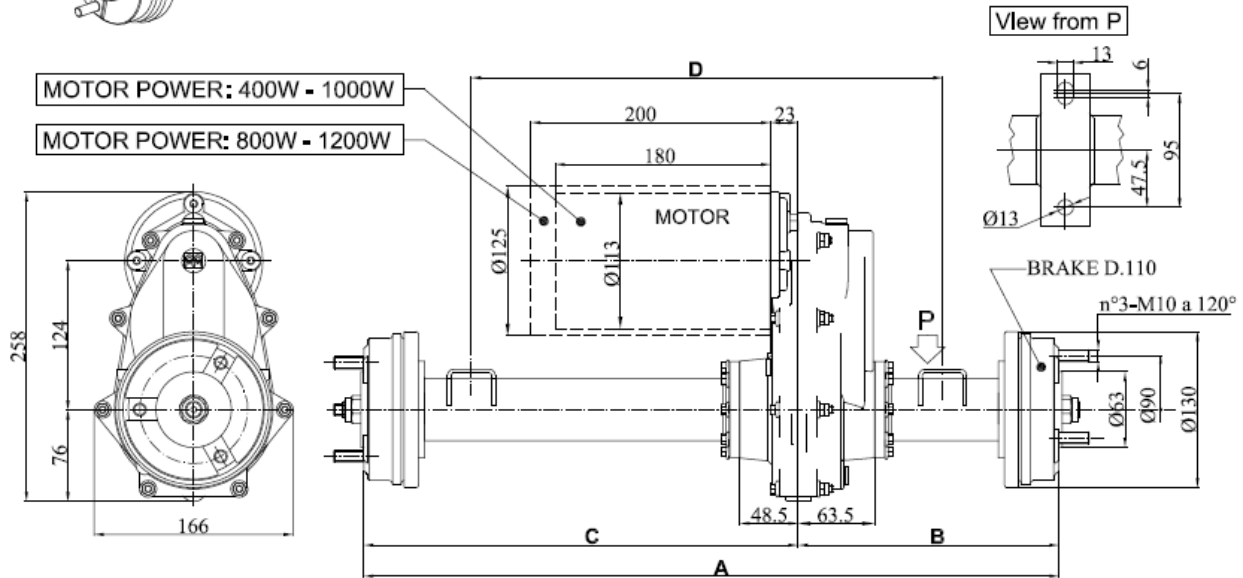
- Motor up to 1500W - 24V/36V/48V
- Maximum output torque 400Nm
- Standard gear ratios: 10:1 - 15:1 - 20:1 - 25:1 - 32:1
- Axle for rear drive for loads up to 300kg
- Wheel fitting: with flange
- Track according to customer's requirements

DIMENSIONS TO DRAW:

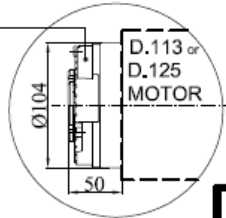
- A = min.400mm - max.900mm
- B = according to customer's requirements
- C = according to customer's requirements
- D = according to customer's requirements



S21-110



OPTIONAL
- FRENO ELETTROMAGNETICO 10Nm
- ELECTROMAGNETIC BRAKE 10Nm



Italiano

DATI TECNICI:

- Motore fino a 1500W - 24V/36V/48V
- Coppia massima in uscita 400Nm
- Rapporti di riduzione standard: 10:1 - 15:1 - 20:1 - 25:1 - 32:1
- Assale per trazione posteriore con carichi fino a 400kg
- Attacco alla ruota: tramite freno a tamburo meccanico con diametro frenata Ø110
- Carreggiata a richiesta cliente

MISURE A DISEGNO:

- **A** = min.400mm - max.900mm
- **B** = a richiesta
- **C** = a richiesta
- **D** = a richiesta

English

SPECIFICATIONS:

- Motor up to 1500W - 24V/36V/48V
- Maximum output torque 400Nm
- Standard gear ratios: 10:1 - 15:1 - 20:1 - 25:1 - 32:1
- Axle for rear drive for loads up to 400kg
- Wheel fitting: with mechanical drum brakes with Ø110 braking diameter
- Track according to customer's requirements

DIMENSIONS TO DRAW:

- **A** = min.400mm - max.900mm
- **B** = according to customer's requirements
- **C** = according to customer's requirements
- **D** = according to customer's requirements